

Courtesy Of Gregory Chanakos Of Zolo Realty

\$485,000 - 34 Norelle Terrace, St. Albert

MLS® #E4452826

\$485,000

3 Bedroom, 2.50 Bathroom, 1,448 sqft
Single Family on 0.00 Acres

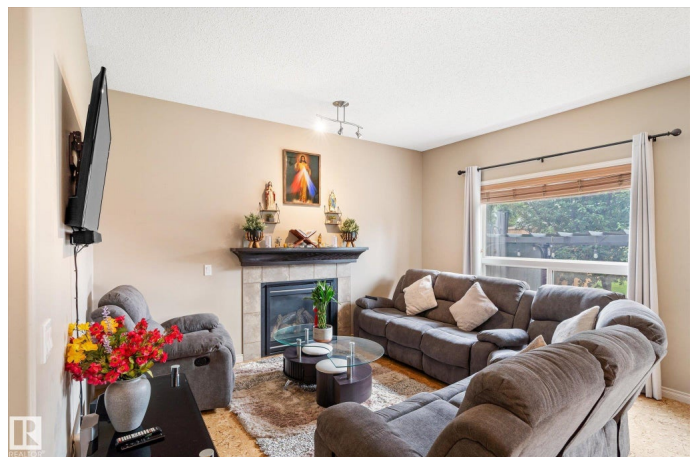
North Ridge, St. Albert, AB

Welcome to 34 Norelle Terrace! 1448 sqft 2 storey in North Ridge. 3 bedrooms, 3 bathrooms, 9' ceilings, insulated oversized attached double garage, low maintenance cork flooring, ceramic tile, and carpet. Toe kick central vac. system, gas fireplace and professionally landscaped yard and Central Air for those hot summer days. Easy access to Ray Gibbons and the Anthony Henday and close to all amenities, including schools, green spaces, walking trails and parks. A must see!!

Built in 2009

Essential Information

MLS® #	E4452826
Price	\$485,000
Bedrooms	3
Bathrooms	2.50
Full Baths	2
Half Baths	1
Square Footage	1,448
Acres	0.00
Year Built	2009
Type	Single Family
Sub-Type	Detached Single Family
Style	2 Storey
Status	Active



Community Information

Address	34 Norelle Terrace
Area	St. Albert
Subdivision	North Ridge
City	St. Albert
County	ALBERTA
Province	AB
Postal Code	T8N 3V5

Amenities

Amenities	Air Conditioner, Detectors Smoke, Gazebo, No Animal Home, No Smoking Home
Parking	Double Garage Attached

Interior

Interior Features	ensuite bathroom
Appliances	Air Conditioning-Central, Dishwasher-Built-In, Dryer, Garage Opener, Microwave Hood Fan, Refrigerator, Stove-Electric, Washer, Window Coverings
Heating	Forced Air-1, Natural Gas
Fireplace	Yes
Fireplaces	Direct Vent, Tile Surround
Stories	2
Has Basement	Yes
Basement	Full, Unfinished

Exterior

Exterior	Wood, Vinyl
Exterior Features	Fenced, Golf Nearby, Landscaped, Playground Nearby
Roof	Asphalt Shingles
Construction	Wood, Vinyl
Foundation	Concrete Perimeter

School Information

Elementary	Bertha Kennedy
Middle	Sturgeon Heights
High	Bellerose Composite

Additional Information

Date Listed	August 13th, 2025
-------------	-------------------

Days on Market 42

Zoning Zone 24

DATA IS DEEMED RELIABLE BUT IS NOT GUARANTEED ACCURATE BY THE REALTORS® ASSOCIATION OF EDMONTON. COPYRIGHT 2025 BY THE REALTORS® ASSOCIATION OF EDMONTON. ALL RIGHTS RESERVED. Trademarks are owned or controlled by the Canadian Real Estate Association (CREA) and identify real estate professionals who are members of CREA (REALTOR®, REALTORS®) and/or the quality of services they provide (MLS®, Multiple Listing Service®)

Listing information last updated on September 24th, 2025 at 4:47am MDT