

Courtesy Of . Prabhjot Kaur Of MaxWell Polaris

\$546,000 - 26 Norwyck Way, Spruce Grove

MLS® #E4452718

\$546,000

4 Bedroom, 3.00 Bathroom, 1,905 sqft
Single Family on 0.00 Acres

Fenwyck, Spruce Grove, AB

Welcome to this beautifully upgraded home in the heart of Spruce Grove! This spacious and modern property features an open-to-below concept with high ceilings and premium finishes throughout. The main floor offers full bedroom and full bathroom, perfect for guests. Upstairs, you'll find master bedroom with 5pc ensuite another 2 perfect sized bedrooms, full 4 pc bath, a large bonus room, and plenty of natural light. Enjoy the added value of a SEPERATE SIDE ENTRANCE to basement, ideal for future development or rental potential. ALL APPLIANCES and WINDOW BLINDS are also included, making this a truly move-in ready home. Located close to schools, parks, shopping, and other amenities – this is the perfect place to call home.



Built in 2025

Essential Information

MLS® #	E4452718
Price	\$546,000
Bedrooms	4
Bathrooms	3.00
Full Baths	3
Square Footage	1,905
Acres	0.00
Year Built	2025

Type Single Family
Sub-Type Detached Single Family
Style 2 Storey
Status Active

Community Information

Address 26 Norwyck Way
Area Spruce Grove
Subdivision Fenwyck
City Spruce Grove
County ALBERTA
Province AB
Postal Code T7X 1Y1

Amenities

Amenities Ceiling 9 ft., Closet Organizer
Parking Double Garage Attached

Interior

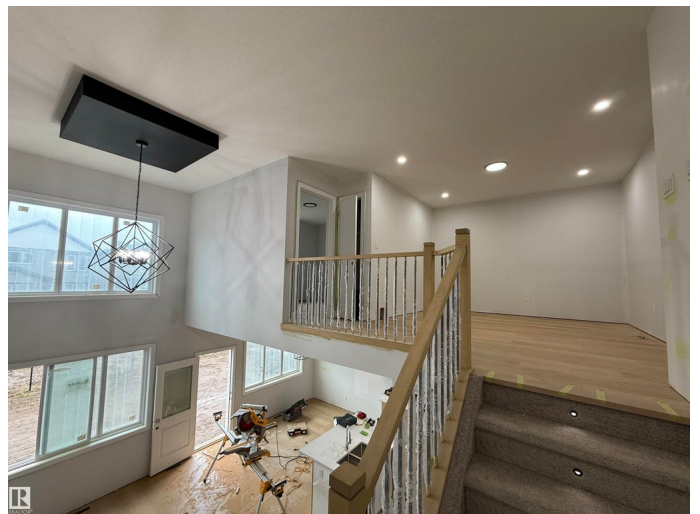
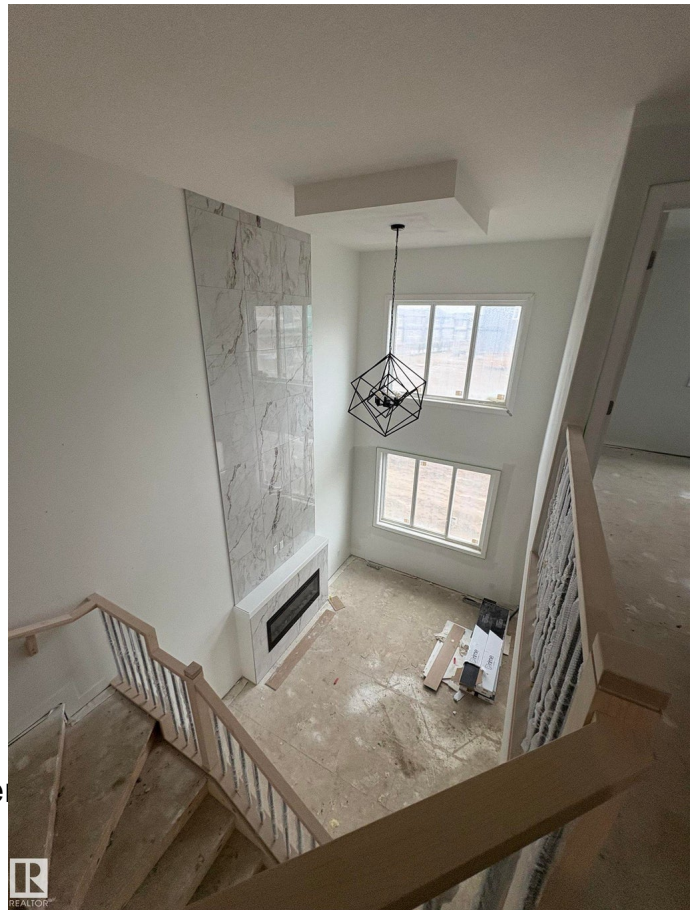
Interior Features ensuite bathroom
Appliances Dishwasher-Built-In, Dryer,
Stove-Gas, Washer
Heating Forced Air-1, Natural Gas
Fireplace Yes
Fireplaces Tile Surround
Stories 2
Has Basement Yes
Basement Full, Unfinished

Exterior

Exterior Wood, Vinyl
Exterior Features Playground Nearby, Schools, Shopping Nearby
Roof Asphalt Shingles
Construction Wood, Vinyl
Foundation Concrete Perimeter

Additional Information

Date Listed August 13th, 2025
Days on Market 8



DATA IS DEEMED RELIABLE BUT IS NOT GUARANTEED ACCURATE BY THE REALTORS® ASSOCIATION OF EDMONTON. COPYRIGHT 2025 BY THE REALTORS® ASSOCIATION OF EDMONTON. ALL RIGHTS RESERVED. Trademarks are owned or controlled by the Canadian Real Estate Association (CREA) and identify real estate professionals who are members of CREA (REALTOR®, REALTORS®) and/or the quality of services they provide (MLS®, Multiple Listing Service®)

Listing information last updated on August 21st, 2025 at 8:32am MDT