

\$799,800 - 14014 106 Avenue, Edmonton

MLS® #E4447742

\$799,800

4 Bedroom, 2.00 Bathroom, 1,736 sqft

Single Family on 0.00 Acres

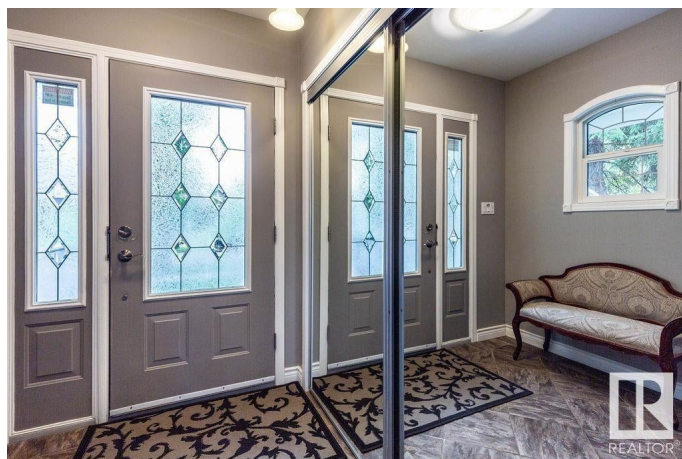
Glenora, Edmonton, AB

Welcome to Glenora, where charm meets modern living! This fully renovated and expanded 1.5-storey home is bright, open, and move-in ready. With 4 bedrooms—3 up and 1 in the finished basement—plus a 4pc bath upstairs and 3pc down, there's room for everyone. The main floor offers flexible living and dining spaces perfect for family life or entertaining. Downstairs includes a cozy rec room, laundry, and extra bedroom. Step into your private backyard oasis with newer sidewalks, a large deck, and lush landscaping. The double garage has a lofted storage area. Enjoy the beauty of a tree-lined street with schools, groceries, and the new LRT stop just a short walk away. After 40+ years with one loving family, this gem is ready for you!

Built in 1949

Essential Information

MLS® #	E4447742
Price	\$799,800
Bedrooms	4
Bathrooms	2.00
Full Baths	2
Square Footage	1,736
Acres	0.00
Year Built	1949



Type	Single Family
Sub-Type	Detached Single Family
Style	1 and Half Storey
Status	Active

Community Information

Address	14014 106 Avenue
Area	Edmonton
Subdivision	Glenora
City	Edmonton
County	ALBERTA
Province	AB
Postal Code	T5N 1B2

Amenities

Amenities	Carbon Monoxide Detectors, Deck, Detectors Smoke, No Smoking Home, Skylight, Vinyl Windows
Parking Spaces	4
Parking	Double Garage Detached

Interior

Appliances	Dishwasher-Built-In, Dryer, Garage Control, Garage Opener, Hood Fan, Refrigerator, Stove-Electric, Washer, Window Coverings
Heating	Forced Air-1, Natural Gas
Stories	3
Has Basement	Yes
Basement	Full, Finished

Exterior

Exterior	Wood, Stucco
Exterior Features	Back Lane, Fenced, Fruit Trees/Shrubs, Landscaped, Playground Nearby, Public Transportation, Schools, Shopping Nearby
Roof	Asphalt Shingles
Construction	Wood, Stucco
Foundation	Concrete Perimeter

School Information

Elementary	Grovenor School/St.Vincent
Middle	West Minister/St.Mark
High	Ross Sheppard

Additional Information

Date Listed July 14th, 2025
Days on Market 14
Zoning Zone 11

DATA IS DEEMED RELIABLE BUT IS NOT GUARANTEED ACCURATE BY THE REALTORS® ASSOCIATION OF EDMONTON. COPYRIGHT 2025 BY THE REALTORS® ASSOCIATION OF EDMONTON. ALL RIGHTS RESERVED.Trademarks are owned or controlled by the Canadian Real Estate Association (CREA) and identify real estate professionals who are members of CREA (REALTOR®, REALTORS®) and/or the quality of services they provide (MLS®, Multiple Listing Service®)
Listing information last updated on July 28th, 2025 at 5:17pm MDT