

\$256,800 - 108 812 Welsh Drive, Edmonton

MLS® #E4446712

\$256,800

2 Bedroom, 2.00 Bathroom, 823 sqft

Condo / Townhouse on 0.00 Acres

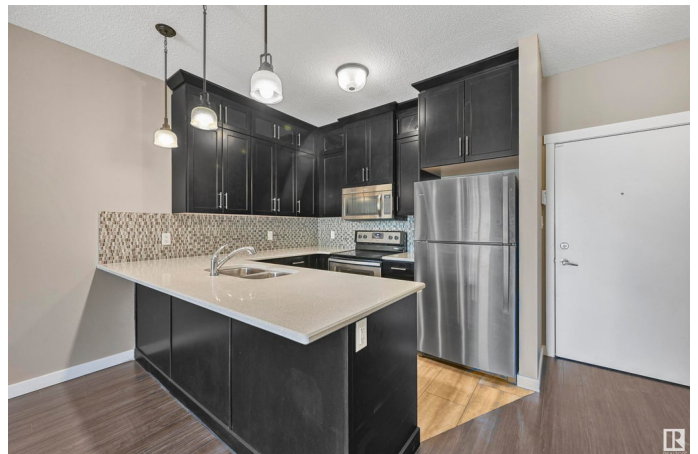
Walker, Edmonton, AB

ATTN first-time homebuyers & investors. Welcome to Village at Walker Lake. This spacious open-concept two-bedroom, 2 bath condo w/ a walk-through closet offers an abundance of natural light. This home features air conditioning, 9' ceilings, a chef's kitchen with stainless steel appliances & quartz countertops, in-suite laundry, a ground level powered stall & storage. This well-maintained complex offers visitor parking & is conveniently located near shopping, walking trails & Lake. It also has quick proximity to Anthony Henday, South Common, schools & public transportation. A must-see!

Built in 2016

Essential Information

| | |
|----------------|-----------------------|
| MLS® # | E4446712 |
| Price | \$256,800 |
| Bedrooms | 2 |
| Bathrooms | 2.00 |
| Full Baths | 2 |
| Square Footage | 823 |
| Acres | 0.00 |
| Year Built | 2016 |
| Type | Condo / Townhouse |
| Sub-Type | Lowrise Apartment |
| Style | Multi Level Apartment |



| | |
|--------|--------|
| Status | Active |
|--------|--------|

Community Information

| | |
|-------------|---------------------|
| Address | 108 812 Welsh Drive |
| Area | Edmonton |
| Subdivision | Walker |
| City | Edmonton |
| County | ALBERTA |
| Province | AB |
| Postal Code | T6X 1Y7 |

Amenities

| | |
|-----------|---------------------|
| Amenities | Patio, Storage Cage |
| Parking | See Remarks |

Interior

| | |
|-------------------|---|
| Interior Features | ensuite bathroom |
| Appliances | Air Conditioner-Window, Dishwasher-Built-In, Microwave Hood Fan, Refrigerator, Stacked Washer/Dryer, Stove-Electric, Window Coverings |
| Heating | Hot Water, Natural Gas |
| # of Stories | 4 |
| Stories | 4 |
| Has Basement | Yes |
| Basement | None, No Basement |

Exterior

| | |
|-------------------|--|
| Exterior | Wood, Vinyl |
| Exterior Features | Airport Nearby, Landscaped, Public Transportation, Shopping Nearby |
| Roof | Asphalt Shingles |
| Construction | Wood, Vinyl |
| Foundation | Concrete Perimeter |

School Information

| | |
|------------|-------------------------|
| Elementary | Ellerslie/CorpusChristi |
| Middle | Ellerslie/CorpusChristi |
| High | JPercyPage/HolyTrinity |

Additional Information

| | |
|----------------|----------------|
| Date Listed | July 9th, 2025 |
| Days on Market | 33 |

| | |
|-----------|---------|
| Zoning | Zone 53 |
| Condo Fee | \$376 |

DATA IS DEEMED RELIABLE BUT IS NOT GUARANTEED ACCURATE BY THE REALTORS® ASSOCIATION OF EDMONTON. COPYRIGHT 2025 BY THE REALTORS® ASSOCIATION OF EDMONTON. ALL RIGHTS RESERVED. Trademarks are owned or controlled by the Canadian Real Estate Association (CREA) and identify real estate professionals who are members of CREA (REALTOR®, REALTORS®) and/or the quality of services they provide (MLS®, Multiple Listing Service®)

Listing information last updated on August 11th, 2025 at 3:32pm MDT