

\$329,900 - 11911 82 St, Edmonton

MLS® #E4446314

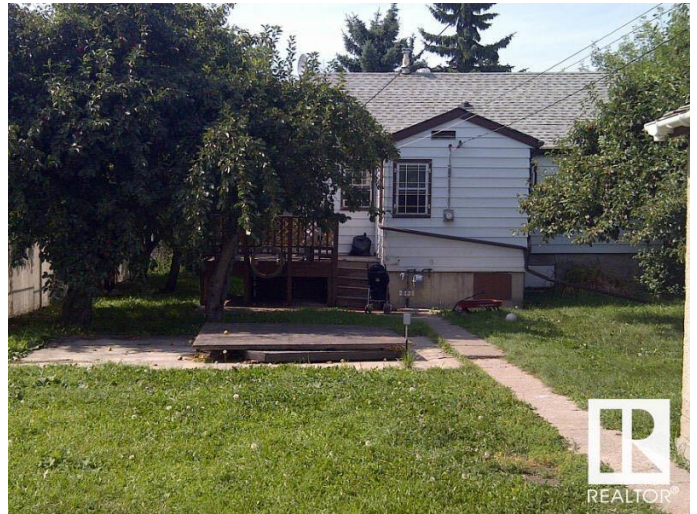
\$329,900

3 Bedroom, 1.00 Bathroom, 895 sqft

Single Family on 0.00 Acres

Eastwood, Edmonton, AB

This is a terrific opportunity to purchase a huge (50'X150') RF3 Zoning lot to build on, live in, or rent out. This property has total 3 Bedrooms, 1 full washroom. This lot is situated on a beautiful tree lined street in central Eastwood. This LARGE LOT provides tons of potential for future development, NEW BYLAWS allowing for 8 UNITS - build a side by side duplex plus basement suites or split the lot into 2 skinnies â€” the possibilities are endless!. Close to major transit routes, and quick access to downtown, Royal Alex hospital, and NAIT and within walking distance to parks, schools, & public transit â€” the location is fantastic. MUST SEE!!



Built in 1944

Essential Information

| | |
|----------------|------------------------|
| MLS® # | E4446314 |
| Price | \$329,900 |
| Bedrooms | 3 |
| Bathrooms | 1.00 |
| Full Baths | 1 |
| Square Footage | 895 |
| Acres | 0.00 |
| Year Built | 1944 |
| Type | Single Family |
| Sub-Type | Detached Single Family |

| | |
|--------|----------|
| Style | Bungalow |
| Status | Active |

Community Information

| | |
|-------------|-------------|
| Address | 11911 82 St |
| Area | Edmonton |
| Subdivision | Eastwood |
| City | Edmonton |
| County | ALBERTA |
| Province | AB |
| Postal Code | T5B 2W4 |

Amenities

| | |
|-----------|------------------------|
| Amenities | Deck |
| Parking | Double Garage Detached |

Interior

| | |
|--------------|--|
| Appliances | Dryer, Oven-Built-In, Refrigerator, Stove-Electric, Washer |
| Heating | Forced Air-1, Natural Gas |
| Stories | 1 |
| Has Basement | Yes |
| Basement | Full, Partially Finished |

Exterior

| | |
|-------------------|--|
| Exterior | Wood, Vinyl |
| Exterior Features | Back Lane, Fenced, Playground Nearby, Public Swimming Pool, Public Transportation, Shopping Nearby |
| Roof | Asphalt Shingles |
| Construction | Wood, Vinyl |
| Foundation | Concrete Perimeter |

School Information

| | |
|------------|----------------------|
| Elementary | Delton School |
| Middle | Spruce Avenue School |
| High | Eastglen School |

Additional Information

| | |
|----------------|----------------|
| Date Listed | July 7th, 2025 |
| Days on Market | 10 |
| Zoning | Zone 05 |

DATA IS DEEMED RELIABLE BUT IS NOT GUARANTEED ACCURATE BY THE REALTORS® ASSOCIATION OF EDMONTON. COPYRIGHT 2025 BY THE REALTORS® ASSOCIATION OF EDMONTON. ALL RIGHTS RESERVED.Trademarks are owned or controlled by the Canadian Real Estate Association (CREA) and identify real estate professionals who are members of CREA (REALTOR®, REALTORS®) and/or the quality of services they provide (MLS®, Multiple Listing Service®)

Listing information last updated on July 17th, 2025 at 12:47pm MDT