

\$834,900 - 11 Edgewater Terr, St. Albert

MLS® #E4446272

\$834,900

5 Bedroom, 3.50 Bathroom, 2,394 sqft

Single Family on 0.00 Acres

Erin Ridge North, St. Albert, AB

Visit the Listing Brokerage (and/or listing REALTOR®) website to obtain additional information. WALKOUT BACKING ONTO POND | SOUTH-FACING | 5 BED + DEN + BONUS Walkout estate home built by Parkwood homes in Erin Ridge North backing a peaceful pond and green space with incredible south-facing views. This 2,394 sq ft two-storey with finished walkout basement features exotic hardwood, front sitting room, main floor den, open living/dining with gas fireplace, quartz kitchen counters, large pantry, and stainless-steel fridge (2023). Sunny upper deck with gas BBQ hookup and hot/cold taps. Upstairs: bonus room, laundry with sink, 2 bedrooms, and bright master bedroom with pond views, walk-in, and 5-piece ensuite. Walkout basement: 2 beds, full bath, rec room, and patio to landscaped yard with private gate. Heated oversized garage, A/C, Hunter Douglas blinds, new HWT (2024), and approx. 3,500 sq ft of total living space. Steps to trails, parks, and schools.

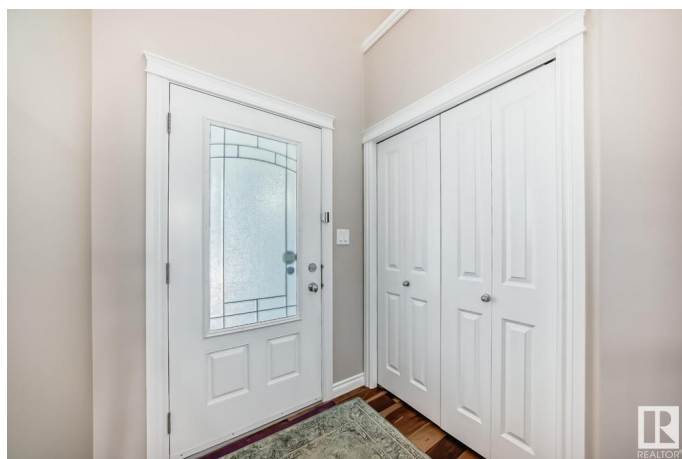
Built in 2013

Essential Information

MLS® # E4446272

Price \$834,900

Bedrooms 5



Bathrooms	3.50
Full Baths	3
Half Baths	1
Square Footage	2,394
Acres	0.00
Year Built	2013
Type	Single Family
Sub-Type	Detached Single Family
Style	2 Storey
Status	Active

Community Information

Address	11 Edgewater Terr
Area	St. Albert
Subdivision	Erin Ridge North
City	St. Albert
County	ALBERTA
Province	AB
Postal Code	T8N 4G5

Amenities

Amenities	Air Conditioner, Carbon Monoxide Detectors, Ceiling 10 ft., Deck, Detectors Smoke, Front Porch, No Smoking Home, Patio, Walkout Basement
Parking	Double Garage Attached
Is Waterfront	Yes

Interior

Interior Features	ensuite bathroom
Appliances	Dishwasher-Built-In, Dryer, Refrigerator, Stove-Electric, Washer, See Remarks
Heating	Forced Air-2, Natural Gas
Fireplace	Yes
Fireplaces	Heatilator/Fan, Remote Control, Tile Surround
Stories	3
Has Basement	Yes
Basement	Full, Finished

Exterior

Exterior	Wood, Hardie Board Siding
Exterior Features	Backs Onto Lake, Backs Onto Park/Trees, Fenced, Landscaped, Playground Nearby, Public Transportation, Schools, Shopping Nearby, View Lake
Roof	Asphalt Shingles
Construction	Wood, Hardie Board Siding
Foundation	Concrete Perimeter

Additional Information

Date Listed	July 4th, 2025
Days on Market	12
Zoning	Zone 24

DATA IS DEEMED RELIABLE BUT IS NOT GUARANTEED ACCURATE BY THE REALTORS® ASSOCIATION OF EDMONTON. COPYRIGHT 2025 BY THE REALTORS® ASSOCIATION OF EDMONTON. ALL RIGHTS RESERVED. Trademarks are owned or controlled by the Canadian Real Estate Association (CREA) and identify real estate professionals who are members of CREA (REALTOR®, REALTORS®) and/or the quality of services they provide (MLS®, Multiple Listing Service®)

Listing information last updated on July 16th, 2025 at 5:32am MDT