

\$169,900 - 108 60 Alpine Place, St. Albert

MLS® #E4445628

\$169,900

2 Bedroom, 1.00 Bathroom, 890 sqft

Condo / Townhouse on 0.00 Acres

Akinsdale, St. Albert, AB

Discover Alpine Estates! This updated ground-floor 2-bedroom condo comes with 2 parking stalls. Walking distance to Elmer Gish Elementary School, a park with an ice rink, Pickleball courts, and Basketball courts. Warm Acacia hardwood flooring welcomes you inside the bright living room, which features large south-facing patio doors offering natural light and private entry. The spacious dining area easily seats 8, and the kitchen is a dream for any chef. With sleek Maple cabinets, granite countertops, and updated stainless steel appliances, it's made for cooking with joy. Both bedrooms down the hall have new vinyl flooring and southern exposure for all-day light. A freshly updated 4-piece bath sits conveniently nearby. Comes with a full In-Suite Laundry room with storage. Step onto your private patio, overlooking green space. additional upgrades include new Hot Water on Demand and a recently replaced furnace motor. Just move in, unpack, and settle into comfort.

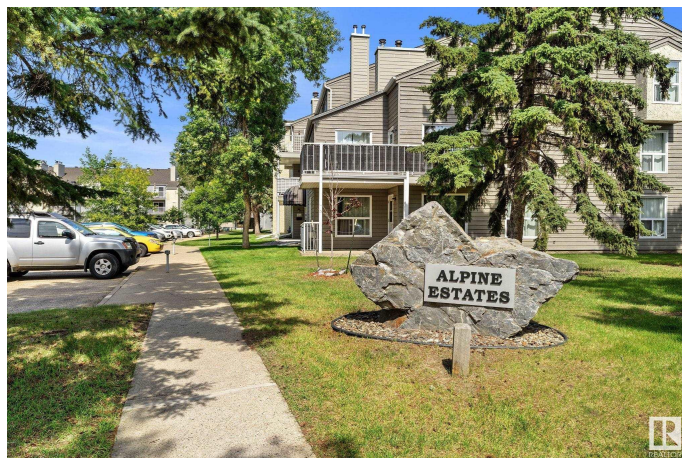
Built in 1982

Essential Information

MLS® # E4445628

Price \$169,900

Bedrooms 2



Bathrooms	1.00
Full Baths	1
Square Footage	890
Acres	0.00
Year Built	1982
Type	Condo / Townhouse
Sub-Type	Lowrise Apartment
Style	Single Level Apartment
Status	Active

Community Information

Address	108 60 Alpine Place
Area	St. Albert
Subdivision	Akinsdale
City	St. Albert
County	ALBERTA
Province	AB
Postal Code	T8N 3Y2

Amenities

Amenities	Hot Water Tankless, Parking-Plug-Ins, Parking-Visitor, Patio
Parking Spaces	2
Parking	2 Outdoor Stalls

Interior

Appliances	Dishwasher-Built-In, Dryer, Microwave Hood Fan, Refrigerator, Stove-Electric, Washer
Heating	Forced Air-1, Natural Gas
# of Stories	3
Stories	1
Has Basement	Yes
Basement	None, No Basement

Exterior

Exterior	Wood, Stucco
Exterior Features	Backs Onto Park/Trees, Landscaped, No Back Lane, No Through Road, Private Setting, Public Swimming Pool, Public Transportation, Schools, Shopping Nearby
Roof	Asphalt Shingles

Construction	Wood, Stucco
Foundation	Concrete Perimeter

Additional Information

Date Listed	July 3rd, 2025
Days on Market	7
Zoning	Zone 24
Condo Fee	\$497

DATA IS DEEMED RELIABLE BUT IS NOT GUARANTEED ACCURATE BY THE REALTORS® ASSOCIATION OF EDMONTON. COPYRIGHT 2025 BY THE REALTORS® ASSOCIATION OF EDMONTON. ALL RIGHTS RESERVED.Trademarks are owned or controlled by the Canadian Real Estate Association (CREA) and identify real estate professionals who are members of CREA (REALTOR®, REALTORS®) and/or the quality of services they provide (MLS®, Multiple Listing Service®)

Listing information last updated on July 10th, 2025 at 2:17am MDT