

## \$595,000 - 10430 135 Street, Edmonton

MLS® #E4445521

**\$595,000**

3 Bedroom, 1.00 Bathroom, 1,270 sqft

Single Family on 0.00 Acres

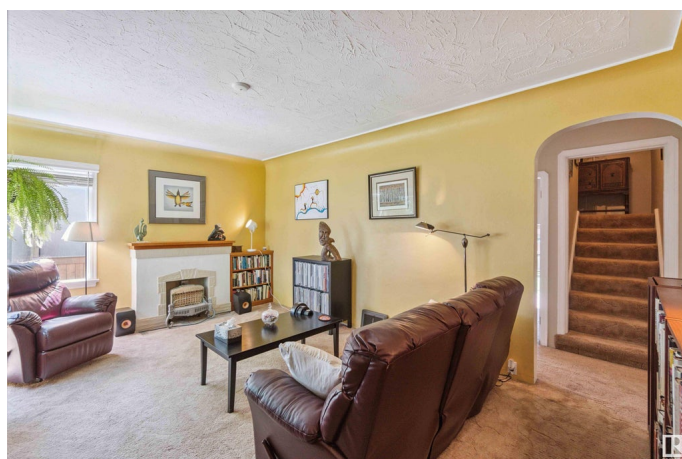
Glenora, Edmonton, AB

A much loved home is available in desirable Glenora. This 1947 home has only had three owners. Numerous upgrades include; a new insulated dry-walled double garage in 2013 with cupboards and slat storage hangers, foundation repair, new weeping tile and sump pump in 2009, air conditioning 2017, roofing 2014, new insulation 2010, electrical upgrade 2010, furnace 2011, eavestroughs 2011, deck and fence 2016, pergola with canopy 2018 and more. Asbestos tiles on the unfinished basement floor were removed in 2023 leaving the floor in a rough shape. Opportunity knocks in one of Edmonton's most desirable and historic neighbourhoods. Just minutes from downtown, universities, the river valley, top schools, and the future Valley Line LRT. Homes like this don't come up often—especially in a neighbourhood where restored and updated character homes regularly command premium prices.

Built in 1947

### Essential Information

MLS® #	E4445521
Price	\$595,000
Bedrooms	3
Bathrooms	1.00
Full Baths	1



Square Footage	1,270
Acres	0.00
Year Built	1947
Type	Single Family
Sub-Type	Detached Single Family
Style	1 and Half Storey
Status	Active

### **Community Information**

Address	10430 135 Street
Area	Edmonton
Subdivision	Glenora
City	Edmonton
County	ALBERTA
Province	AB
Postal Code	T5N 2C6

### **Amenities**

Amenities	Detectors Smoke, No Smoking Home, See Remarks
Parking Spaces	4
Parking	2 Outdoor Stalls, Double Garage Detached

### **Interior**

Appliances	Dryer, Freezer, Refrigerator, Stove-Electric, Washer, Window Coverings, See Remarks
Heating	Forced Air-1, Natural Gas
Fireplace	Yes
Fireplaces	Mantel
Stories	2
Has Basement	Yes
Basement	Full, Unfinished

### **Exterior**

Exterior	Wood, Stucco
Exterior Features	Back Lane, Fenced, Landscaped, Paved Lane, Playground Nearby, Public Transportation, Schools, Vegetable Garden
Roof	Asphalt Shingles
Construction	Wood, Stucco
Foundation	Concrete Perimeter

**Additional Information**

Date Listed                July 3rd, 2025  
Days on Market        4  
Zoning                    Zone 11

DATA IS DEEMED RELIABLE BUT IS NOT GUARANTEED ACCURATE BY THE REALTORS® ASSOCIATION OF EDMONTON. COPYRIGHT 2025 BY THE REALTORS® ASSOCIATION OF EDMONTON. ALL RIGHTS RESERVED.Trademarks are owned or controlled by the Canadian Real Estate Association (CREA) and identify real estate professionals who are members of CREA (REALTOR®, REALTORS®) and/or the quality of services they provide (MLS®, Multiple Listing Service®)  
Listing information last updated on July 7th, 2025 at 3:02pm MDT