

# \$939,000 - 5 Birkshire Crescent, Sherwood Park

MLS® #E4442487

**\$939,000**

3 Bedroom, 3.00 Bathroom, 1,671 sqft  
Single Family on 0.00 Acres

Hillshire, Sherwood Park, AB

Welcome to the Annette floor plan where luxury meets lifestyle in the modern community of Hillshire. This beautifully designed bungalow sits on a 34' pocket lot and offers an incredible layout paired with high-end finishes throughout. With over 3,200 sq ft of total living space including the fully finished basement, this home blends elegance with function. Soaring vaulted ceilings create a bright, open atmosphere, while the thoughtfully designed interior features 3 spacious bedrooms plus a versatile den perfect for a home office or guest space. Every detail has been carefully curated to deliver comfort, sophistication, and timeless style. This is luxury bungalow living at its finest.

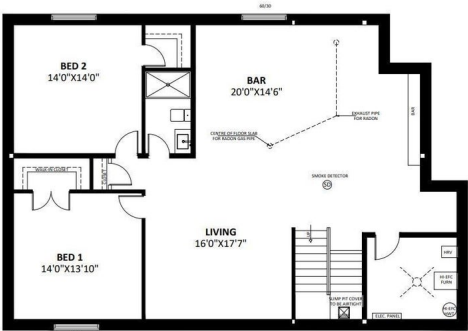
Built in 2025

## Essential Information

MLS® #	E4442487
Price	\$939,000
Bedrooms	3
Bathrooms	3.00
Full Baths	3
Square Footage	1,671
Acres	0.00
Year Built	2025
Type	Single Family



MAIN FLOOR PLAN 1671 SQ FT  
GARAGE 543 SQ FT



BASEMENT PLAN - 1538 SQ FT

Sub-Type	Detached Single Family
Style	Bungalow
Status	Active

### Community Information

Address	5 Birkshire Crescent
Area	Sherwood Park
Subdivision	Hillshire
City	Sherwood Park
County	ALBERTA
Province	AB
Postal Code	T8B 0C6

### Amenities

Amenities	See Remarks
Parking	Double Garage Attached

### Interior

Interior Features	ensuite bathroom
Appliances	See Remarks
Heating	Forced Air-2, Natural Gas
Stories	2
Has Basement	Yes
Basement	Full, Finished

### Exterior

Exterior	Concrete, Stone, Hardie Board Siding
Exterior Features	Schools, Shopping Nearby, See Remarks
Roof	Asphalt Shingles
Construction	Concrete, Stone, Hardie Board Siding
Foundation	Slab

### Additional Information

Date Listed	June 14th, 2025
Days on Market	32
Zoning	Zone 25

DATA IS DEEMED RELIABLE BUT IS NOT GUARANTEED ACCURATE BY THE REALTORS® ASSOCIATION OF EDMONTON. COPYRIGHT 2025 BY THE REALTORS® ASSOCIATION OF EDMONTON. ALL RIGHTS RESERVED. Trademarks are owned or controlled by the Canadian Real Estate Association (CREA) and identify real estate professionals who are members of CREA (REALTOR®, REALTORS®) and/or the quality of services they

provide (MLS®®, Multiple Listing Service®®)  
Listing information last updated on July 16th, 2025 at 9:02am MDT