

## **\$609,900 - 3544 Cherry Landing Landing, Edmonton**

MLS® #E4441945

**\$609,900**

4 Bedroom, 3.00 Bathroom, 1,121 sqft

Single Family on 0.00 Acres

The Orchards At Ellerslie, Edmonton, AB

Charming Orchards bungalow in a great location - one of the very few bungalows in this community! If you are looking for convenient living on one floor, this is a perfect home for you. PLUS, fully developed basement adds extra living space so you have over 2000 sq.ft. total living space with FOUR bedrooms and THREE full bathrooms! A spacious foyer welcomes you in and the living room at the front of the home is spacious and perfect for entertaining. The kitchen and dining area has a corner pantry and lots of cabinet space. The basement stairs are located at the back of the house and there is a door leading to your outdoor living space - deck and fully fenced yard! The main floor has three spacious bedrooms including the primary with full ensuite and a second full bathroom. Downstairs you have a fourth bedroom and third full bath along with a family room and rec room. PLUS laundry and storage are on this level. Attached double garage for your convenience.

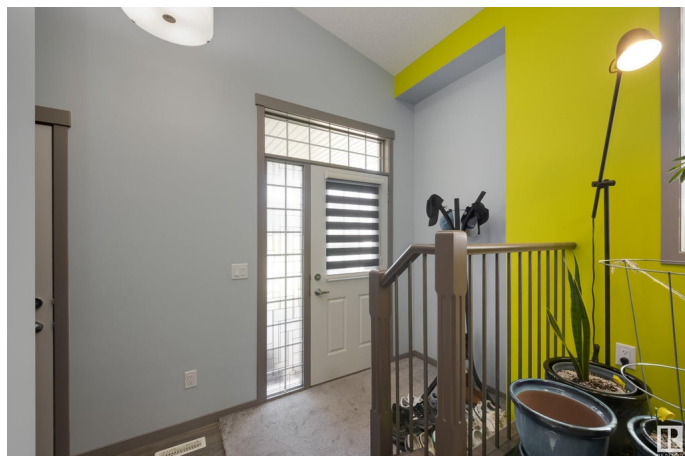
Built in 2018

### **Essential Information**

MLS® # E4441945

Price \$609,900

Bedrooms 4



|                |                        |
|----------------|------------------------|
| Bathrooms      | 3.00                   |
| Full Baths     | 3                      |
| Square Footage | 1,121                  |
| Acres          | 0.00                   |
| Year Built     | 2018                   |
| Type           | Single Family          |
| Sub-Type       | Detached Single Family |
| Style          | Bungalow               |
| Status         | Active                 |

### Community Information

|             |                             |
|-------------|-----------------------------|
| Address     | 3544 Cherry Landing Landing |
| Area        | Edmonton                    |
| Subdivision | The Orchards At Ellerslie   |
| City        | Edmonton                    |
| County      | ALBERTA                     |
| Province    | AB                          |
| Postal Code | T6X 2B5                     |

### Amenities

|           |                                      |
|-----------|--------------------------------------|
| Amenities | Ceiling 9 ft., Deck, Vaulted Ceiling |
| Parking   | Double Garage Attached               |

### Interior

|                   |  |
|-------------------|--|
| Interior Features | ensuite bathroom   |
| Appliances        | Dishwasher-Built-In, Dryer, Microwave Hood Fan, Refrigerator, Stove-Electric, Washer, Window Coverings |
| Heating           | Forced Air-1, Natural Gas  |
| Stories           | 2  |
| Has Basement      | Yes  |
| Basement          | Full, Finished   |

### Exterior

|                   |   |
|-------------------|---|
| Exterior          | Wood, Vinyl   |
| Exterior Features | Back Lane, Fenced, Landscaped, Recreation Use, Schools, Shopping Nearby |
| Roof              | Asphalt Shingles  |
| Construction      | Wood, Vinyl   |
| Foundation        | Concrete Perimeter  |

**School Information**

Elementary                Jan Reimer School

**Additional Information**

Date Listed                June 12th, 2025  
Days on Market        56  
Zoning                      Zone 53  
HOA Fees                  600  
HOA Fees Freq.        Annually

DATA IS DEEMED RELIABLE BUT IS NOT GUARANTEED ACCURATE BY THE REALTORS® ASSOCIATION OF EDMONTON. COPYRIGHT 2025 BY THE REALTORS® ASSOCIATION OF EDMONTON. ALL RIGHTS RESERVED.Trademarks are owned or controlled by the Canadian Real Estate Association (CREA) and identify real estate professionals who are members of CREA (REALTOR®, REALTORS®) and/or the quality of services they provide (MLS®, Multiple Listing Service®)  
Listing information last updated on August 7th, 2025 at 7:32pm MDT