

\$735,000 - 5213 104a Street, Edmonton

MLS® #E4436334

\$735,000

5 Bedroom, 3.50 Bathroom, 1,767 sqft
Single Family on 0.00 Acres

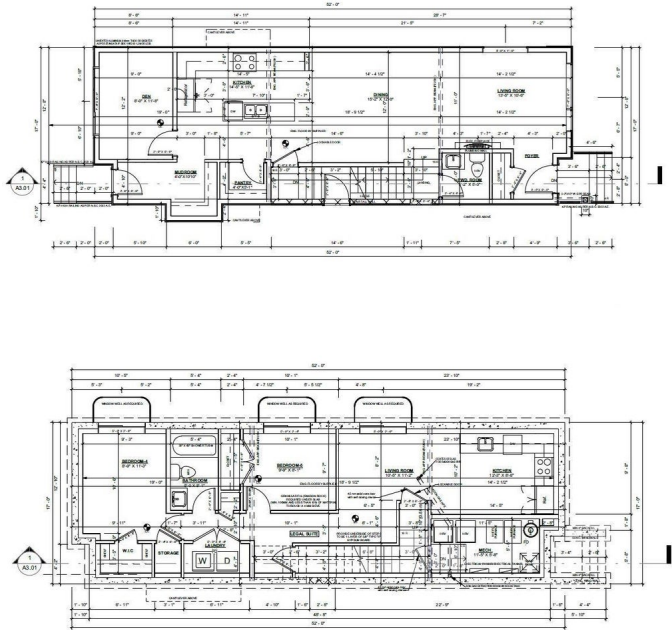
Pleasantview (Edmonton), Edmonton, AB

Located in the Pleasantview community, this spacious 5-bedroom, 4-bathroom home offers exceptional living space for growing families. The main floor features a den, a modern kitchen with a generous island, an inviting living area, and a convenient powder room. Upstairs, you'll find three bedrooms, including a master suite with an ensuite bathroom, a shared bathroom, and a laundry area. The fully finished legal basement includes two additional bedrooms, a full bathroom, and a separate living area, perfect for guests or rental income. This home also offers a double garage and is ideally situated close to schools, parks, shopping, and public amenities. The property is under construction and estimated completion is in 90 days.

Built in 2025

Essential Information

| | |
|----------------|-----------|
| MLS® # | E4436334 |
| Price | \$735,000 |
| Bedrooms | 5 |
| Bathrooms | 3.50 |
| Full Baths | 3 |
| Half Baths | 1 |
| Square Footage | 1,767 |
| Acres | 0.00 |



| | |
|------------|------------------------|
| Year Built | 2025 |
| Type | Single Family |
| Sub-Type | Detached Single Family |
| Style | 2 Storey |
| Status | Active |

Community Information

| | |
|-------------|-------------------------|
| Address | 5213 104a Street |
| Area | Edmonton |
| Subdivision | Pleasantview (Edmonton) |
| City | Edmonton |
| County | ALBERTA |
| Province | AB |
| Postal Code | T6H 2L9 |

Amenities

| | |
|-----------|--------------------------------------------|
| Amenities | Carbon Monoxide Detectors, Detectors Smoke |
| Parking | Double Garage Detached |

Interior

| | |
|-------------------|------------------------|
| Interior Features | ensuite bathroom |
| Appliances | See Remarks |
| Heating | Forced Air-2, Electric |
| Stories | 3 |
| Has Suite | Yes |
| Has Basement | Yes |
| Basement | Full, Finished |

Exterior

| | |
|-------------------|--------------------------------------------------------------------------------------------|
| Exterior | Wood, Vinyl |
| Exterior Features | Back Lane, Playground Nearby, Public Transportation, Schools, Shopping Nearby, See Remarks |
| Roof | Asphalt Shingles |
| Construction | Wood, Vinyl |
| Foundation | Concrete Perimeter |

Additional Information

| | |
|----------------|----------------|
| Date Listed | May 14th, 2025 |
| Days on Market | 61 |

Zoning

Zone 15

DATA IS DEEMED RELIABLE BUT IS NOT GUARANTEED ACCURATE BY THE REALTORS® ASSOCIATION OF EDMONTON. COPYRIGHT 2025 BY THE REALTORS® ASSOCIATION OF EDMONTON. ALL RIGHTS RESERVED. Trademarks are owned or controlled by the Canadian Real Estate Association (CREA) and identify real estate professionals who are members of CREA (REALTOR®, REALTORS®) and/or the quality of services they provide (MLS®, Multiple Listing Service®)

Listing information last updated on July 14th, 2025 at 1:17am MDT