

\$215,000 - 107 11933 106 Avenue, Edmonton

MLS® #E4435420

\$215,000

2 Bedroom, 1.00 Bathroom, 911 sqft

Condo / Townhouse on 0.00 Acres

Queen Mary Park, Edmonton, AB

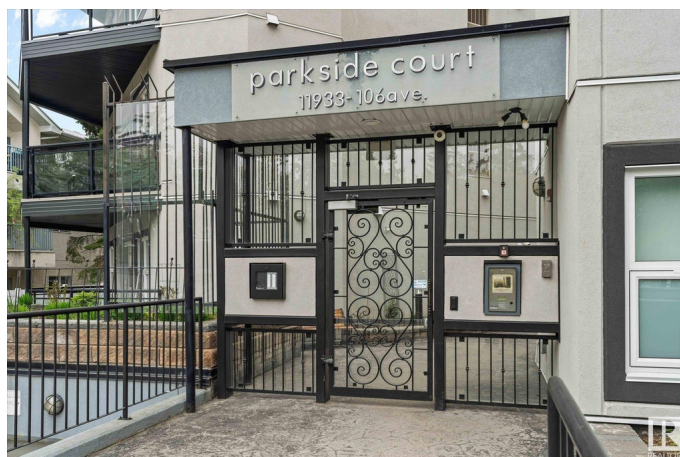
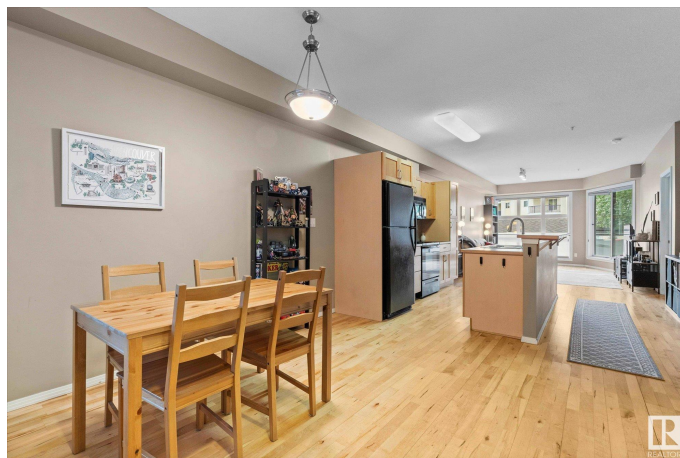
Stylish Ground-Floor Condo in Prime Location! Located within walking distance to the Brewery District, Manchester Square, downtown, and scenic walking trails, this secure and modern 2-bedroom unit is perfect for investors or first-time home buyers. Enjoy an open-concept layout with a spacious kitchen, dining, and living area filled with natural light from large windows. Features include in-suite laundry, a good-sized balcony with a gas line, and underground parking. Close to all amenities—urban living at its best!

Built in 2004

Essential Information

MLS® #	E4435420
Price	\$215,000
Bedrooms	2
Bathrooms	1.00
Full Baths	1
Square Footage	911
Acres	0.00
Year Built	2004
Type	Condo / Townhouse
Sub-Type	Lowrise Apartment
Style	Single Level Apartment
Status	Active

Community Information



Address	107 11933 106 Avenue
Area	Edmonton
Subdivision	Queen Mary Park
City	Edmonton
County	ALBERTA
Province	AB
Postal Code	T5H 0S2

Amenities

Amenities	Patio, Secured Parking, Security Door
Parking Spaces	1
Parking	Heated, Parkade, Underground

Interior

Appliances	Dishwasher-Built-In, Dryer, Oven-Microwave, Refrigerator, Stove-Electric, Washer, Window Coverings
Heating	Forced Air-1, Natural Gas
# of Stories	4
Stories	4
Has Basement	Yes
Basement	None, No Basement

Exterior

Exterior	Wood, Stucco
Exterior Features	Public Transportation, Schools, Shopping Nearby
Roof	Flat
Construction	Wood, Stucco
Foundation	Concrete Perimeter

Additional Information

Date Listed	May 9th, 2025
Days on Market	4
Zoning	Zone 08
Condo Fee	\$419

DATA IS DEEMED RELIABLE BUT IS NOT GUARANTEED ACCURATE BY THE REALTORS® ASSOCIATION OF EDMONTON. COPYRIGHT 2025 BY THE REALTORS® ASSOCIATION OF EDMONTON. ALL RIGHTS RESERVED. Trademarks are owned or controlled by the Canadian Real Estate Association (CREA) and identify real estate professionals who are members of CREA (REALTOR®, REALTORS®) and/or the quality of services they provide (MLS®, Multiple Listing Service®)

Listing information last updated on May 14th, 2025 at 6:02am MDT