

\$450,000 - 1750 Chapman Way, Edmonton

MLS® #E4435177

\$450,000

3 Bedroom, 2.50 Bathroom, 1,788 sqft

Single Family on 0.00 Acres

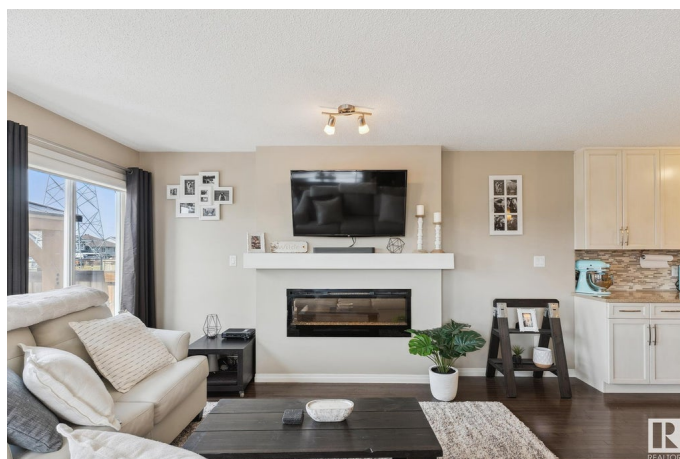
Chappelle Area, Edmonton, AB

Set on a corner lot with a massive yard, this 3-bedroom, 2.5-bath home offers over 1788 sqft of living space not including the basement. Inside, youâ€™ll find an open-concept modern kitchen with granite counters, an 8-foot island, and an electric fireplace that adds a relaxed vibe to the living room. Upstairs includes a versatile bonus room, laundry room, and a spacious primary suite with double doors. Douglas Hunter drapes and blinds finish every window. Outside, enjoy a fully fenced yard, pergola over a concrete patio extension, and a deck made for unwinding. Freshly painted and turn key ready! Close to parks and schoolsâ€”just the way you want it.

Built in 2013

Essential Information

| | |
|----------------|---------------|
| MLS® # | E4435177 |
| Price | \$450,000 |
| Bedrooms | 3 |
| Bathrooms | 2.50 |
| Full Baths | 2 |
| Half Baths | 1 |
| Square Footage | 1,788 |
| Acres | 0.00 |
| Year Built | 2013 |
| Type | Single Family |



| | |
|----------|-------------|
| Sub-Type | Half Duplex |
| Style | 2 Storey |
| Status | Active |

Community Information

| | |
|-------------|------------------|
| Address | 1750 Chapman Way |
| Area | Edmonton |
| Subdivision | Chappelle Area |
| City | Edmonton |
| County | ALBERTA |
| Province | AB |
| Postal Code | T6W 2E8 |

Amenities

| | |
|-----------|------------------------|
| Amenities | Air Conditioner |
| Parking | Single Garage Attached |

Interior

| | |
|-------------------|---|
| Interior Features | ensuite bathroom |
| Appliances | Dishwasher-Built-In, Dryer, Garage Control, Garage Opener, Microwave Hood Fan, Refrigerator, Stove-Electric, Washer, Window Coverings |
| Heating | Forced Air-1, Natural Gas |
| Fireplaces | Insert |
| Stories | 2 |
| Has Basement | Yes |
| Basement | Full, Unfinished |

Exterior

| | |
|-------------------|--------------------------------|
| Exterior | Wood, Stucco, Vinyl |
| Exterior Features | Corner Lot, Fenced, Landscaped |
| Roof | Asphalt Shingles |
| Construction | Wood, Stucco, Vinyl |
| Foundation | Concrete Perimeter |

Additional Information

| | |
|----------------|---------------|
| Date Listed | May 8th, 2025 |
| Days on Market | 6 |
| Zoning | Zone 55 |
| HOA Fees | 426 |

HOA Fees Freq. Annually

DATA IS DEEMED RELIABLE BUT IS NOT GUARANTEED ACCURATE BY THE REALTORS® ASSOCIATION OF EDMONTON. COPYRIGHT 2025 BY THE REALTORS® ASSOCIATION OF EDMONTON. ALL RIGHTS RESERVED.Trademarks are owned or controlled by the Canadian Real Estate Association (CREA) and identify real estate professionals who are members of CREA (REALTOR®, REALTORS®) and/or the quality of services they provide (MLS®, Multiple Listing Service®)

Listing information last updated on May 14th, 2025 at 4:32pm MDT