

# \$569,900 - 3235 28 Avenue, Edmonton

MLS® #E4435022

**\$569,900**

4 Bedroom, 3.50 Bathroom, 1,883 sqft

Single Family on 0.00 Acres

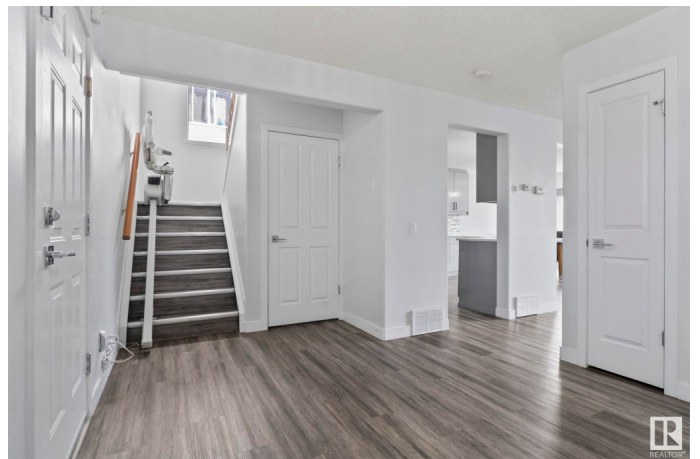
Silver Berry, Edmonton, AB

Exceptional Opportunity in Silver Berry! This fully renovated 2-storey home with a south-facing backyard is nestled in a quiet cul-de-sac near a park. Offering 1883 sq. ft. plus a finished basement, with quick access to Anthony Henday & Whitemud Drive. The main floor features a bright living room with gas fireplace, spacious island kitchen with corner pantry, sunny dining area, and 2-pce bath. Upstairs offers 4 bedrooms, including a primary with 3-pce ensuite and walk-in closet, plus laundry and full bath. The basement includes a family room, 4th bedroom, den, and full bath. Enjoy a heated, finished double garage, landscaped yard, 12'x16' deck, and patio. Recent upgrades: new roof (2021), hot water tank (2024), flooring, paint, kitchen, counters, appliances, lighting, and plumbing fixtures (2021). A perfect blend of style, comfort, and convenience!

Built in 2002

## Essential Information

MLS® #	E4435022
Price	\$569,900
Bedrooms	4
Bathrooms	3.50
Full Baths	3
Half Baths	1



Square Footage	1,883
Acres	0.00
Year Built	2002
Type	Single Family
Sub-Type	Detached Single Family
Style	2 Storey
Status	Active

### Community Information

Address	3235 28 Avenue
Area	Edmonton
Subdivision	Silver Berry
City	Edmonton
County	ALBERTA
Province	AB
Postal Code	T6T 1P6

### Amenities

Amenities	Closet Organizers, Deck, Detectors Smoke, No Animal Home, No Smoking Home
Parking	Double Garage Attached

### Interior

Interior Features	ensuite bathroom
Appliances	Dishwasher-Built-In, Dryer, Garage Control, Garage Opener, Hood Fan, Stove-Electric, Washer, Window Coverings, Refrigerators-Two, Garage Heater
Heating	Forced Air-1, Natural Gas
Fireplace	Yes
Fireplaces	Wall Mount
Stories	3
Has Basement	Yes
Basement	Full, Finished

### Exterior

Exterior	Wood, Vinyl
Exterior Features	Airport Nearby, Cul-De-Sac, Fenced, Flat Site, Golf Nearby, Landscaped, Level Land
Roof	Asphalt Shingles

Construction	Wood, Vinyl
Foundation	Concrete Perimeter

**Additional Information**

Date Listed	May 7th, 2025
Days on Market	7
Zoning	Zone 30

DATA IS DEEMED RELIABLE BUT IS NOT GUARANTEED ACCURATE BY THE REALTORS® ASSOCIATION OF EDMONTON. COPYRIGHT 2025 BY THE REALTORS® ASSOCIATION OF EDMONTON. ALL RIGHTS RESERVED.Trademarks are owned or controlled by the Canadian Real Estate Association (CREA) and identify real estate professionals who are members of CREA (REALTOR®, REALTORS®) and/or the quality of services they provide (MLS®, Multiple Listing Service®)

Listing information last updated on May 14th, 2025 at 6:47pm MDT