

\$319,999 - 4250 29 Avenue, Edmonton

MLS® #E4428419

\$319,999

4 Bedroom, 3.50 Bathroom, 1,623 sqft

Condo / Townhouse on 0.00 Acres

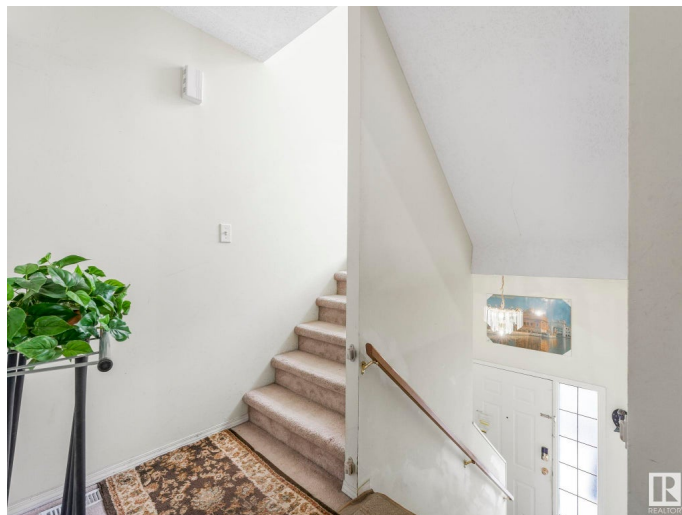
Bisset, Edmonton, AB

Investors or first time buyers ,here is a perfect opportunity for you to own this bright open floor plan,spacious 3 bedroom fully finished end unit town house in very desirable neighborhood of Bisset.Ground floor have a room and single car garage .Going upstairs you see large living and dinning area equipped with corner fireplace and large windows for plenty of day light ,kitchen fitted with oak cabinets and appliances .Second floor or upstairs have 3 bedrooms and a full 4 pc bath.Primary bedrooms has 3 piece bath and nice size closet.This unit is located near all amenities like bus service school shopping center So come on down have a look and call it HOME!!

Built in 1999

Essential Information

| | |
|----------------|-----------|
| MLS® # | E4428419 |
| Price | \$319,999 |
| Bedrooms | 4 |
| Bathrooms | 3.50 |
| Full Baths | 3 |
| Half Baths | 1 |
| Square Footage | 1,623 |
| Acres | 0.00 |
| Year Built | 1999 |



| | |
|----------|-------------------|
| Type | Condo / Townhouse |
| Sub-Type | Townhouse |
| Style | 2 Storey |
| Status | Active |

Community Information

| | |
|-------------|----------------|
| Address | 4250 29 Avenue |
| Area | Edmonton |
| Subdivision | Bisset |
| City | Edmonton |
| County | ALBERTA |
| Province | AB |
| Postal Code | T6L 7E9 |

Amenities

| | |
|-----------|----------------------------------------------|
| Amenities | No Animal Home, No Smoking Home, See Remarks |
| Parking | Single Garage Attached |

Interior

| | |
|-------------------|---------------------------------------------------------------------------------------------------------------------------------|
| Interior Features | ensuite bathroom |
| Appliances | Dishwasher-Built-In, Dryer, Fan-Ceiling, Garage Control, Garage Opener, Washer, Window Coverings, Refrigerators-Two, Stoves-Two |
| Heating | Forced Air-1, Natural Gas |
| Stories | 3 |
| Has Basement | Yes |
| Basement | Full, Finished |

Exterior

| | |
|-------------------|----------------------------------------------------------------------------------------------------------------------------------------------------------|
| Exterior | Wood, Stucco |
| Exterior Features | Airport Nearby, Corner Lot, Flat Site, Golf Nearby, Landscaped, No Back Lane, Paved Lane, Playground Nearby, Public Transportation, Schools, See Remarks |
| Roof | Asphalt Shingles |
| Construction | Wood, Stucco |
| Foundation | Concrete Perimeter |

Additional Information

| | |
|----------------|------------------|
| Date Listed | March 31st, 2025 |
| Days on Market | 162 |
| Zoning | Zone 29 |

Condo Fee \$310

DATA IS DEEMED RELIABLE BUT IS NOT GUARANTEED ACCURATE BY THE REALTORS® ASSOCIATION OF EDMONTON. COPYRIGHT 2025 BY THE REALTORS® ASSOCIATION OF EDMONTON. ALL RIGHTS RESERVED.Trademarks are owned or controlled by the Canadian Real Estate Association (CREA) and identify real estate professionals who are members of CREA (REALTOR®, REALTORS®) and/or the quality of services they provide (MLS®, Multiple Listing Service®)

Listing information last updated on September 9th, 2025 at 5:32pm MDT