

\$574,900 - 4712 188 Street, Edmonton

MLS® #E4425386

\$574,900

4 Bedroom, 3.50 Bathroom, 1,822 sqft
Single Family on 0.00 Acres

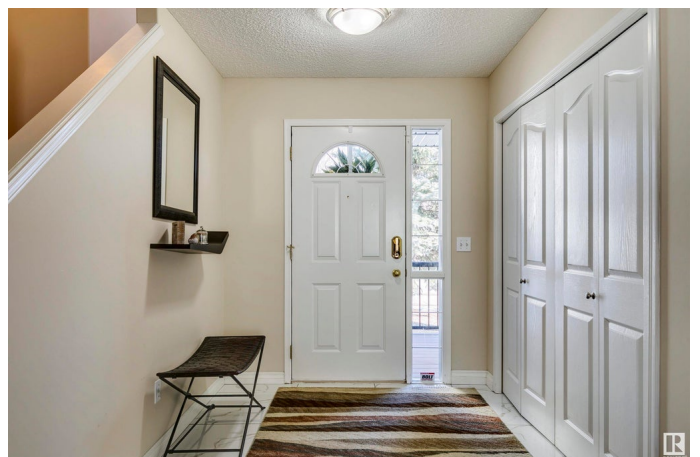
Jamieson Place, Edmonton, AB

Welcome home to a place where every season has been thoughtfully enhanced for comfort and style. Nestled in a family-friendly community, this beautifully maintained, fully finished two-story home is truly move-in ready. Warm hardwood floors, a cozy fireplace, a bonus room and California closets create an inviting atmosphere, while a fully renovated kitchen with quartz counters and a coffee bar adds a touch of luxury. Step outside to a private backyard retreat, complete with composite decks, a gazebo, and lush landscaping. Recent updates, including a new roof, patio doors, and top-of-the-line appliances, ensure modern convenience. With central air-conditioning, heated garage, and keyless entry, every detail has been considered. This is more than a house, it's a home designed for effortless living.

Built in 2000

Essential Information

MLS® #	E4425386
Price	\$574,900
Bedrooms	4
Bathrooms	3.50
Full Baths	3
Half Baths	1
Square Footage	1,822



Acres	0.00
Year Built	2000
Type	Single Family
Sub-Type	Detached Single Family
Style	2 Storey
Status	Active

Community Information

Address	4712 188 Street
Area	Edmonton
Subdivision	Jamieson Place
City	Edmonton
County	ALBERTA
Province	AB
Postal Code	T6M 2S2

Amenities

Amenities	Air Conditioner, Deck, Vinyl Windows, Natural Gas Stove Hookup
Parking	Double Garage Attached

Interior

Interior Features	ensuite bathroom
Appliances	Air Conditioning-Central, Dishwasher-Built-In, Dryer, Freezer, Refrigerator, Stove-Gas, Vacuum System Attachments, Vacuum Systems, Washer, Window Coverings
Heating	Forced Air-1, Natural Gas
Fireplace	Yes
Fireplaces	Stone Facing, Wall Mount
Stories	3
Has Basement	Yes
Basement	Full, Finished

Exterior

Exterior	Wood, Vinyl
Exterior Features	Fenced, Landscaped, Playground Nearby, Public Transportation, Schools, Shopping Nearby
Roof	Asphalt Shingles
Construction	Wood, Vinyl
Foundation	Concrete Perimeter

Additional Information

Date Listed March 13th, 2025

Days on Market 1

Zoning Zone 20

DATA IS DEEMED RELIABLE BUT IS NOT GUARANTEED ACCURATE BY THE REALTORS® ASSOCIATION OF EDMONTON. COPYRIGHT 2025 BY THE REALTORS® ASSOCIATION OF EDMONTON. ALL RIGHTS RESERVED. Trademarks are owned or controlled by the Canadian Real Estate Association (CREA) and identify real estate professionals who are members of CREA (REALTOR®, REALTORS®) and/or the quality of services they provide (MLS®, Multiple Listing Service®)

Listing information last updated on March 14th, 2025 at 3:32pm MDT