

# \$539,900 - 14631 93 Avenue, Edmonton

MLS® #E4424937

**\$539,900**

4 Bedroom, 2.00 Bathroom, 1,146 sqft  
Single Family on 0.00 Acres

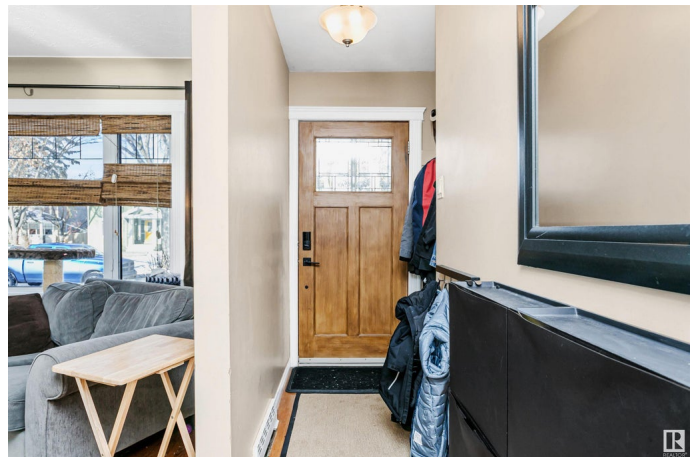
Parkview, Edmonton, AB

Great location in the heart of Parkview!  
Spacious 1146 sq.ft. bungalow, with 3 bed, 2 bath, f/f basement and a double detached garage on a 56'x120' lot. An open and bright floor plan awaits you, with coved ceilings, hardwood flooring, and updates including doors, baseboards and triple pane windows. The kitchen has Oak cabinetry, newer appliances, countertops and overlooks the south backyard. There are 3 good sized bedrooms on the this level, with a full 4-piece renovated bathroom. The lower level of the home is fully-finished and has potential for a suite. There is a living room area with n/g fireplace, an office space that could be a 4th bedroom, flex space and full 3-piece bathroom. Other notable upgrades include: furnace + hot water tank + a/c (2012); 100 amp electrical service; shingles (2010). The yard is fully landscaped with a cedar deck (2010) and newer fence (2022). Minutes to the Ravine, Parkview elementary and easy access to shopping, Whitemud and the Downtown core.

Built in 1954

## Essential Information

MLS® #	E4424937
Price	\$539,900



Bedrooms	4
Bathrooms	2.00
Full Baths	2
Square Footage	1,146
Acres	0.00
Year Built	1954
Type	Single Family
Sub-Type	Detached Single Family
Style	Bungalow
Status	Active

### **Community Information**

Address	14631 93 Avenue
Area	Edmonton
Subdivision	Parkview
City	Edmonton
County	ALBERTA
Province	AB
Postal Code	T5R 5G7

### **Amenities**

Amenities	Deck, Detectors Smoke, Vinyl Windows, See Remarks
Parking Spaces	4
Parking	Double Garage Detached

### **Interior**

Appliances	Dishwasher-Built-In, Dryer, Refrigerator, Stove-Electric, Washer
Heating	Forced Air-1, Natural Gas
Fireplaces	Mantel
Stories	1
Has Basement	Yes
Basement	Full, Finished

### **Exterior**

Exterior	Wood, Stucco
Exterior Features	Back Lane, Fenced, Fruit Trees/Shrubs, Landscaped, Park/Reserve, Playground Nearby, Public Swimming Pool, Public Transportation, Schools, Shopping Nearby
Roof	Asphalt Shingles

Construction	Wood, Stucco
Foundation	Concrete Perimeter

### **School Information**

Elementary	Parkview/St. Paul
Middle	Kenilworth/St. Rose
High	Ross Sheppard/St. Francis

### **Additional Information**

Date Listed	March 10th, 2025
Days on Market	4
Zoning	Zone 10

DATA IS DEEMED RELIABLE BUT IS NOT GUARANTEED ACCURATE BY THE REALTORS® ASSOCIATION OF EDMONTON. COPYRIGHT 2025 BY THE REALTORS® ASSOCIATION OF EDMONTON. ALL RIGHTS RESERVED. Trademarks are owned or controlled by the Canadian Real Estate Association (CREA) and identify real estate professionals who are members of CREA (REALTOR®, REALTORS®) and/or the quality of services they provide (MLS®, Multiple Listing Service®)

Listing information last updated on March 14th, 2025 at 12:47pm MDT